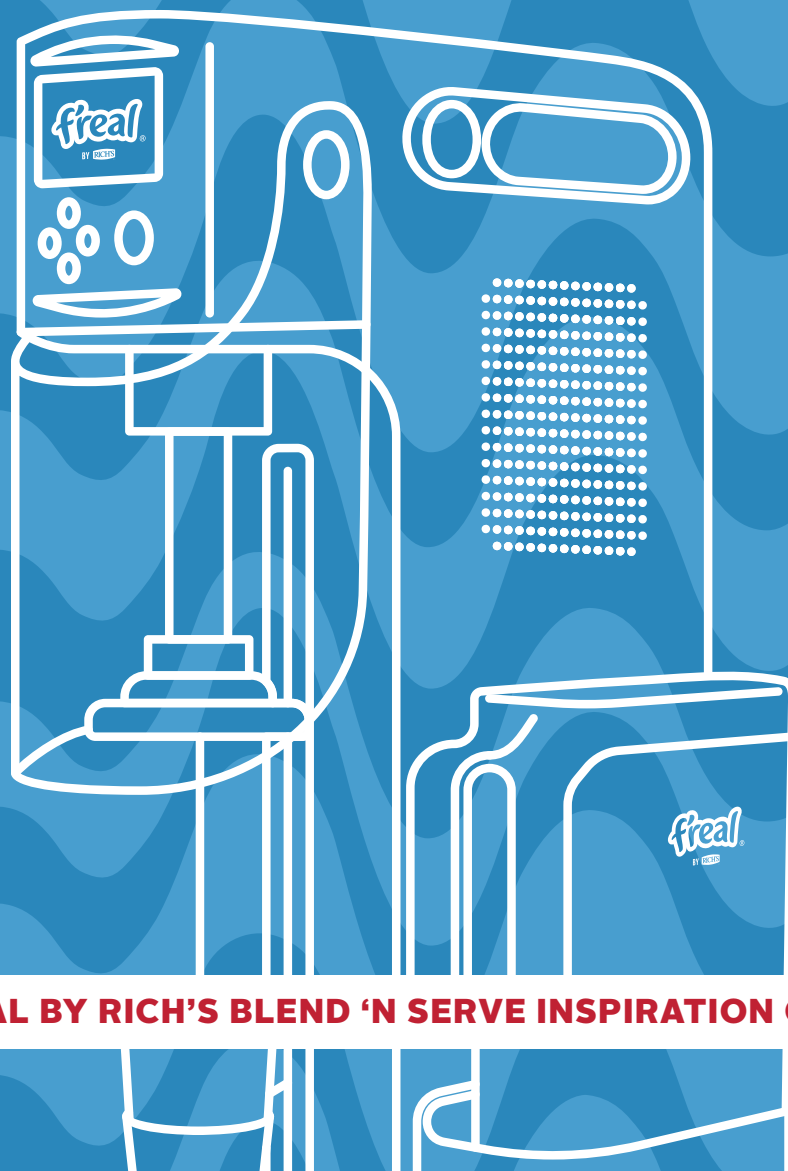


f'real[®]

BY RICH'S

SHAKE IT UP

ACROSS THE TRENDS



F'REAL BY RICH'S BLEND 'N SERVE INSPIRATION GUIDE



COOKIE (80138) MONSTER SHAKE

THE TRENDS:

Nostalgic Indulgence, Fun for Kids

SHAKE INGREDIENTS:

f'real by Rich's Vanilla blend & Serve
Blue food gel

TOPPINGS:

Whipped cream
Mini chocolate chip cookies
Blue sprinkles

Serve in a plastic cup with dome lid.



COSMIC CEREAL MILKSHAKE

(80138)

THE TREND:

Nostalgic Indulgence

SHAKE INGREDIENTS:

f'real by Rich's Vanilla blend & Serve
Edible glitter

TOPPINGS:

Whipped cream
Fruity Pebbles® cereal

Serve in a bar/
restaurant-style glass.



S'MORES SHAKE

(80138)

THE TREND:

Nostalgic Indulgence

SHAKE INGREDIENTS:

f'real by Rich's Vanilla blend & Serve
Graham crackers
Marshmallow syrup
Chocolate sauce

TOPPINGS:

Chocolate sauce
On Top® Mallow
Graham cracker crumbles
Mini marshmallows

Serve in a bar/
restaurant-style glass.



CHERRY VANILLA SHAKE

(80138)

THE TREND:

Nostalgic Indulgence

SHAKE INGREDIENTS:

f'real by Rich's Vanilla blend & Serve
Cherry syrup

TOPPINGS:

Whipped cream
Maraschino cherry

Serve in to-go cup for fast casual.



BIRTHDAY CAKE SHAKE

(80138)

THE TREND:

Nostalgic Indulgence

SHAKE INGREDIENTS:

f'real by Rich's Vanilla blend & Serve
Rainbow sprinkles

TOPPINGS:

Whipped cream
Rainbow sprinkles

Serve in a plastic cup with dome lid.





PASSIONFRUIT COLADA SHAKE

(80138)

THE TREND:

Mocktails

SHAKE INGREDIENTS:

f'real by Rich's Vanilla blend & Serve
Passionfruit puree
Pineapple puree
Coconut syrup

TOPPINGS:

Whipped cream
Cherry
Shredded coconut

Serve in a plastic cup with dome lid.



MINT MOJITO SHAKE

(80138)

THE TREND:

Boozy Milkshakes

SHAKE INGREDIENTS:

f'real by Rich's Vanilla blend & Serve
Rum
Lime juice
Mint

TOPPINGS:

Whipped cream
Lime zest
Mint

Serve in a plastic cup with dome lid.



LIMONCELLO SHAKE

(80138)

THE TREND:

Boozy Milkshakes

SHAKE INGREDIENTS:

f'real by Rich's Vanilla blend & Serve
Limoncello

TOPPINGS:

Whipped cream
Lemon zest
Lemon slice

Serve in a bar/
restaurant-style glass.



DRAGON FRUIT SHAKE

(80138)

THE TREND:

Trendy Tropical Fruit

SHAKE INGREDIENTS:

f'real by Rich's Vanilla blend & Serve
Dragon fruit syrup

TOPPINGS:

Whipped cream

Serve in a bar/
restaurant-style glass.



VANILLA MATCHA SHAKE

(80138)

THE TREND:

Global Flavours

SHAKE INGREDIENTS:

f'real by Rich's Vanilla blend & Serve
Monin® Matcha Green Tea syrup

TOPPINGS:

On Top® Soft Whip
Matcha powder

Serve in to-go cup for fast casual.



MIX-IN MODE

COMBINATIONS

Enabling this setting adds a pause before blending is completed so chopped inclusions like cookies, purees or candy can be added. The blend finishes with a mixing action to incorporate the inclusions without destroying their texture.

ADDITIONS WITH MIX-IN MODE = TEXTURE & FLAVOUR

Alternate blend profile with three stages:

- First phase blends and partially whips product
- Cup holder descends to the “home” position, inclusions are manually added
- After inclusions are added, blend button is pushed to mix in the inclusions and complete whipping

Chopped inclusions should be added during the pause between the first blending phase and second mixing phase. Final texture and flavour added to the product will depend on the type and temperature of the inclusion when it is added.

- Dense and hard inclusions (i.e., Snickers®, peanut butter cups) will maintain much of their original texture and add some flavour
- Dense but absorbent inclusions (i.e., cookie dough) will maintain larger pieces, but some smaller pieces will be more broken down and add some flavour
- Soft and brittle inclusions (i.e., cookies & cream, Butterfingers®, brownie bites) will break down the most, with a slightly finer texture they will impact the most flavour
- Colder inclusions will maintain more original piece identity, while inclusions at warmer temperatures will be chopped up more
- Inclusions with sticky components (i.e., caramel, honey) will intensify the outcomes outlined above



MIX-IN MODE RECOMMENDATIONS			
		12 OZ RETAIL	16 OZ FOODSERVICE
INCLUSION	SIZE	1/4 Chop	1/4 Chop Max
	AMOUNT	Scant 1/4 Cup Scoop	1/4 Cup Scoop



**VANILLA + MINT/GREEN
SYRUP + OREOS®**



**VANILLA + STRAWBERRY JAM OR
SYRUP + SHORTBREAD COOKIES**



CHOCOLATE + BROWNIE PIECES



VANILLA + COOKIE DOUGH



**VANILLA + REESE'S®
PEANUT BUTTER CUPS**



VANILLA + OREOS®

f'real
BY RICH'S